



# The Winsor School

Centers for Performing Arts and Wellness Academic Wing

103 Pilgrim Road, Boston, Massachusetts

Maggie Golden

Lighting / Electrical

Advisor – Richard Mistrick

## Technical Report 1

Part 1 Completed - September 8<sup>th</sup>, 2014

Part 2 Completed - September 19<sup>th</sup>, 2014

# TECH REPORT PART 1 - LIGHTING MEMO

## Introduction

As stated in the Building Statistics report, the Winsor School is a day school for young women in grades 5 – 12. The school's mission is to drive young women towards their aspirations and dream while also teaching them how to be independent and confident leaders. This redesign will focus on the new wing of the campus, the Center for Performing Arts and Wellness Academic Building. This building features an abundance of fitness centers, performance spaces, rehearsal rooms, meditations rooms, gymnasiums and squash courts. The report below calls out which spaces specifically will be focused on and redesigned throughout the course of the year.

## Proposed Areas of Study

### LARGE WORK SPACE | DANCE REHEARSAL ROOM

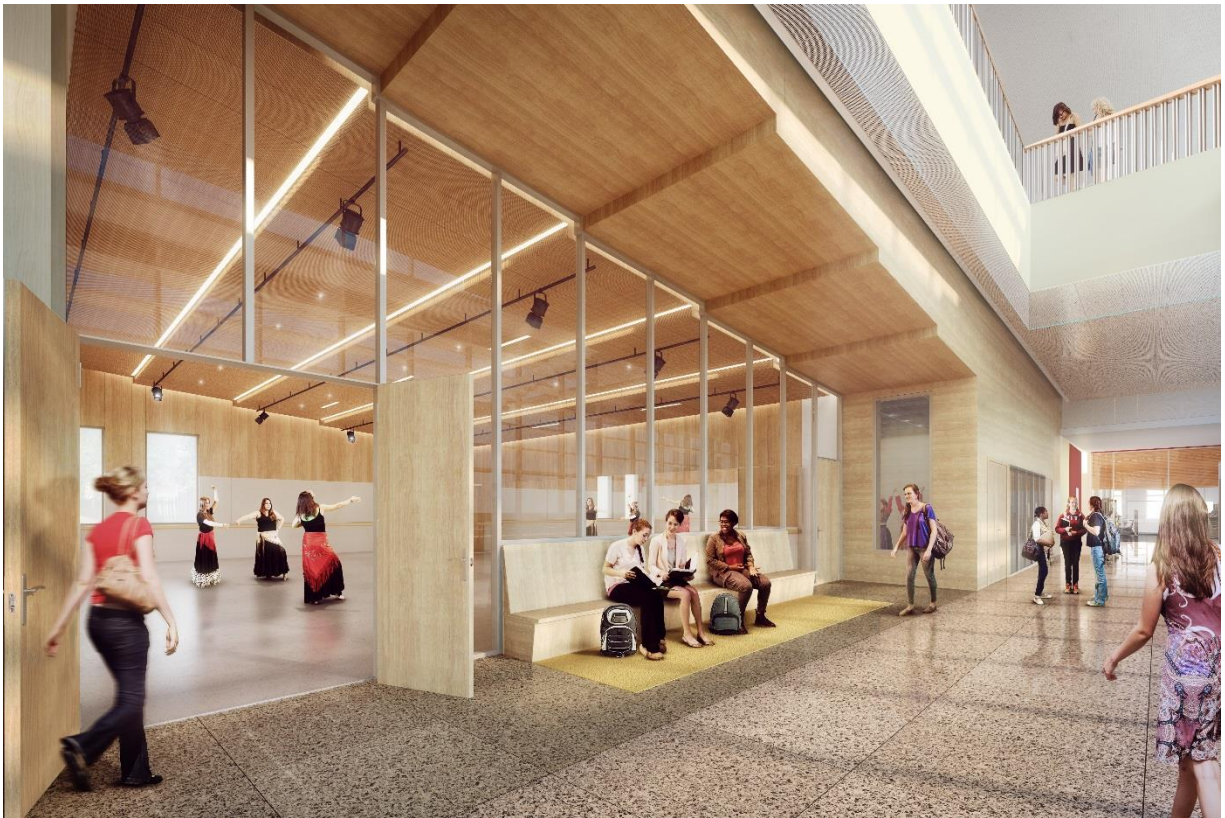


Figure 1 - Dance Rehearsal Rendering - Courtesy of William Rawn Assoc.

### Summary & Dimensions

The dance rehearsal space is located on the first floor on the plan north side of the building and adjacent to the northeast façade. It is very important for many reasons, but first and foremost because it is one of the first things visitors will see when arriving through performing arts entrance and when traveling to the theatre spaces by route of the main stairs. **Because of the space's importance and it's flexibility, this space was chosen to have three different schematic design concepts for the third technical report as well as the psychological impression analysis.**

Square Footage: 1648 sf

Height: 15ft – 6in to 12ft – 6in (stepping down 6in at a time)

# TECH REPORT PART 1 - LIGHTING MEMO

## Tasks & Activities

Dance classes, practices, small performances, talks

## Materials

Floor: T&G Wood Strip Floor / Marley Dance Floor

Walls: Wood Louvre 2 / Acoustic Fabric-Wrapped Panel 2" Thick / Gypsum Board, Mirrors, Glass

Ceiling: Perforated Metal Panel "Custom Bacon Veneer"

## Plan

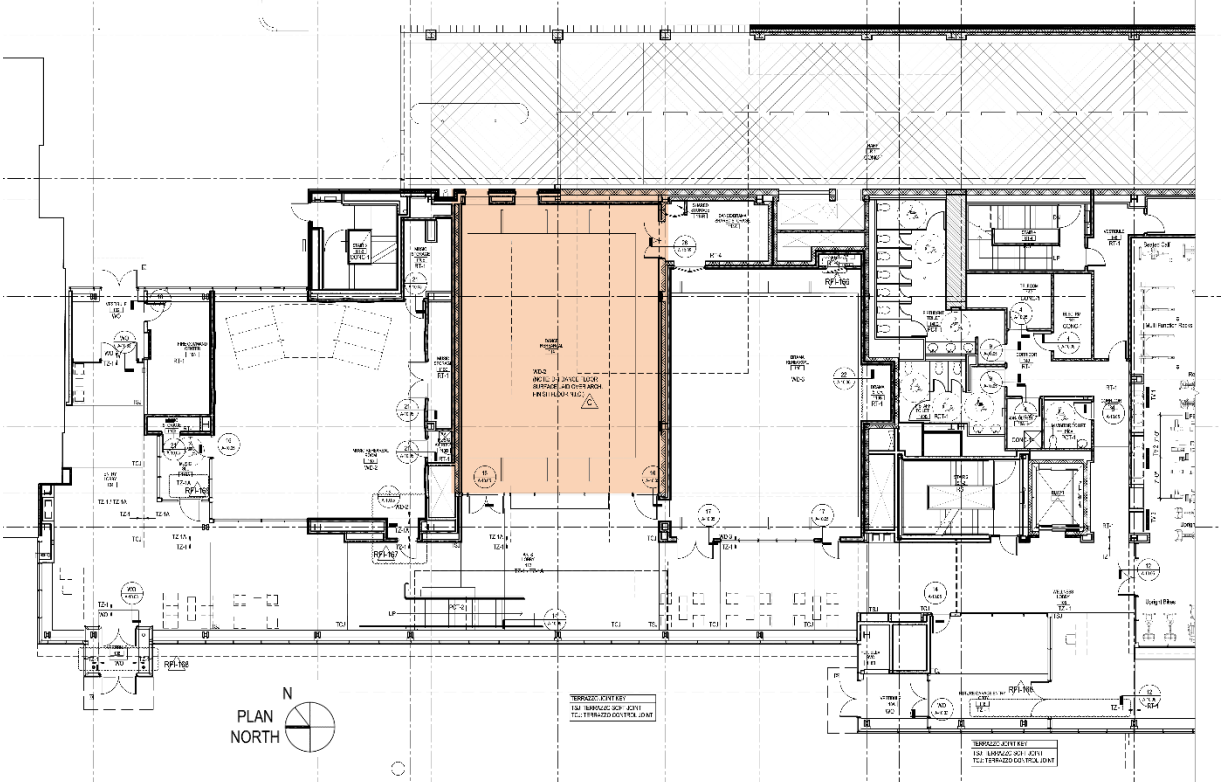


Figure 2 - First Floor "North" Plan – Dance Rehearsal Room

# TECH REPORT PART 1 - LIGHTING MEMO

## SPECIAL PURPOSE SPACE | THEATRE & ASSEMBLY



Figure 3 - Theatre Rendering - Courtesy of William Rawn Assoc.

### Summary & Dimensions

The theatre is located on the third floor of the building and it is contained in the plan east or northeast part of the building. It is a triple height space that includes a mezzanine and a sloping floor towards the stage. To arrive at this location, occupants must travel through the north entrance facing the dance rehearsal room and travel up an open staircase, or travel from the existing academic building by way of the “link” bridge. The challenge of this space will be the controllability of the lighting fixtures as well as not preventing the functionality of the theatre lighting designed by the theatre consultants.

Square Footage: Orchestra - 2982 sf; Mezzanine – 2028 sf; Stage -2058 sf

Height: Entrance to Ceiling – 36ft; Mezzanine at 14ft AFF; Catwalk at 26ft AFF

### Tasks & Activities

Performances, assemblies, lectures

### Materials

Floor: Orchestra - Stained Concrete / Carpet; Stage- Plywood;

Mezzanine: Carpet / Porcelain Ceramic Tile; Catwalk- Painted Black Steel

Walls: Orchestra & Mezzanine- GWB / Wood Wall Panel / Wood Louvre 1, 2 & 3; Stage- CMU blocks

# TECH REPORT PART 1 - LIGHTING MEMO

Ceilings: Metal Mesh / Acoustical Reflectors

## Plans

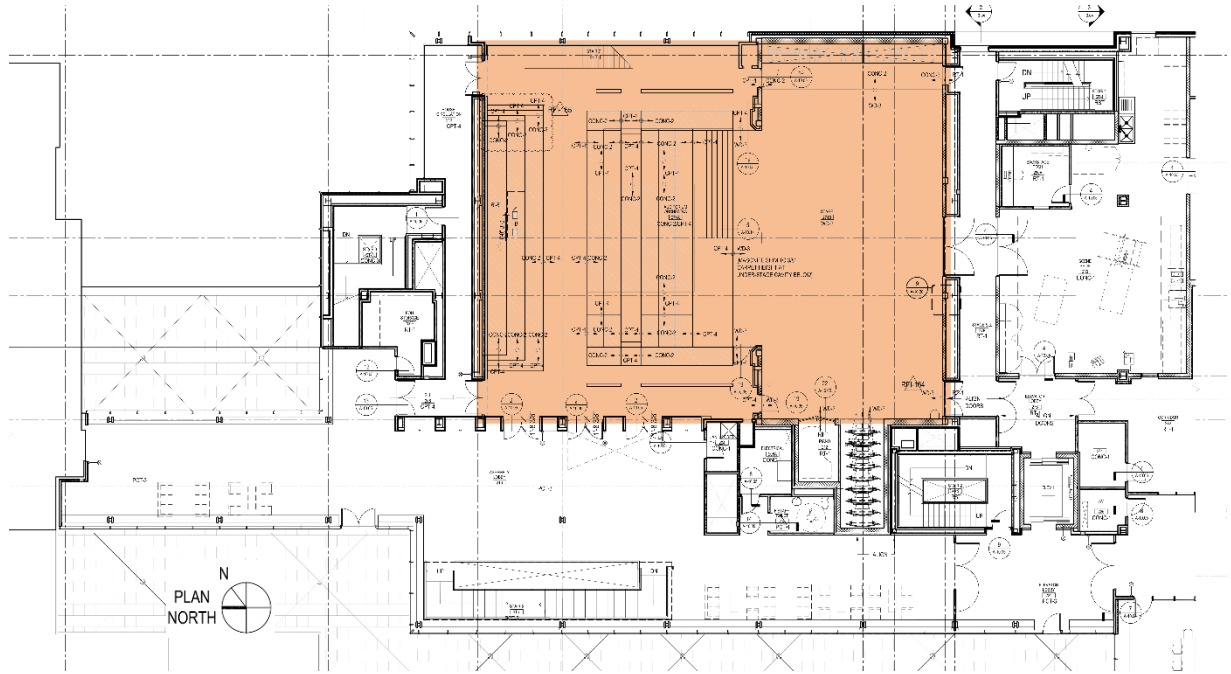


Figure 4 - Third Floor "North" Plan – 2 story Theatre

## CIRCULATION SPACE | SOUTH ENTRANCE – WELLNESS LOBBY & CORRIDOR



Figure 5 - Wellness Lobby Rendering - Courtesy of William Rawn Assoc.

# TECH REPORT PART 1 - LIGHTING MEMO

## Summary & Dimensions

The Wellness Lobby and Corridor is location on the first floor in the plan west or southwest area of the building. It is a double high space with one wall of floor to ceiling glass curtain wall. This lobby has their own separate entrance from the performance portion of the building but can be entered from a hallway adjoining the two areas. This space was chosen for the large amount of daylighting and possibly direct light that will enter in from the southwest sun and travel into the corridor and into the fitness area, which also has floor to ceiling glass. The Fitness area is shown on the plan below with a fading color, as it will only be analyzed from a daylighting aspect.

Square Footage: 1624 sf

Height: 17ft – 0in

## Tasks & Activities

Circulation, Lounge Areas, Study/Breakout Areas

## Materials

Floor: Terrazzo Floor / Recycled Rubber Athletic Flooring

Walls: Glass / GWB

Ceilings: Metal Paneling / GWB above

## Plans

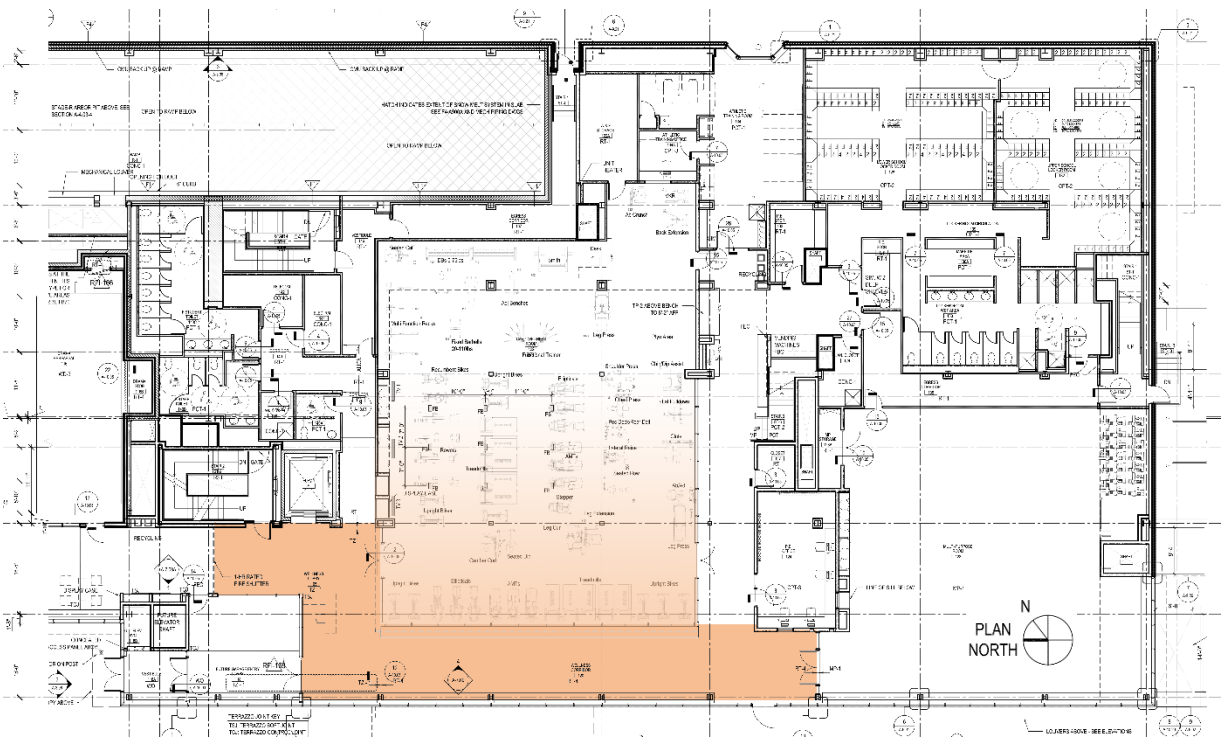


Figure 6 - First Floor South Plan - Wellness Lobby and Possible Fitness Area

# TECH REPORT PART 1 - LIGHTING MEMO

## OUTDOOR SPACE | COURTYARD PLAZA



Figure 7 - Exterior Rendering - Courtesy of William Rawn Assoc.

### Summary & Dimensions

The Courtyard Plaza is in the plan Northeast section of the building and is directly actual east of the building. It is fairly open and leads to entrances of both the wellness area and performance areas of the new wing. It is also directly next to two sporting fields that are planned to be washed with light.

Square Footage: Pavement - 2572 sf; Grounds- 14600 sf  
Soffit / Canopy Height: 11 ft

### Tasks & Activities

Lounge Areas, Way finding

### Materials

Concrete Pavers (large, small) / Wood Canopy / Bituminous Concrete / Grass / Groundcover / Landscaping

# TECH REPORT PART 1 - LIGHTING MEMO

Plan

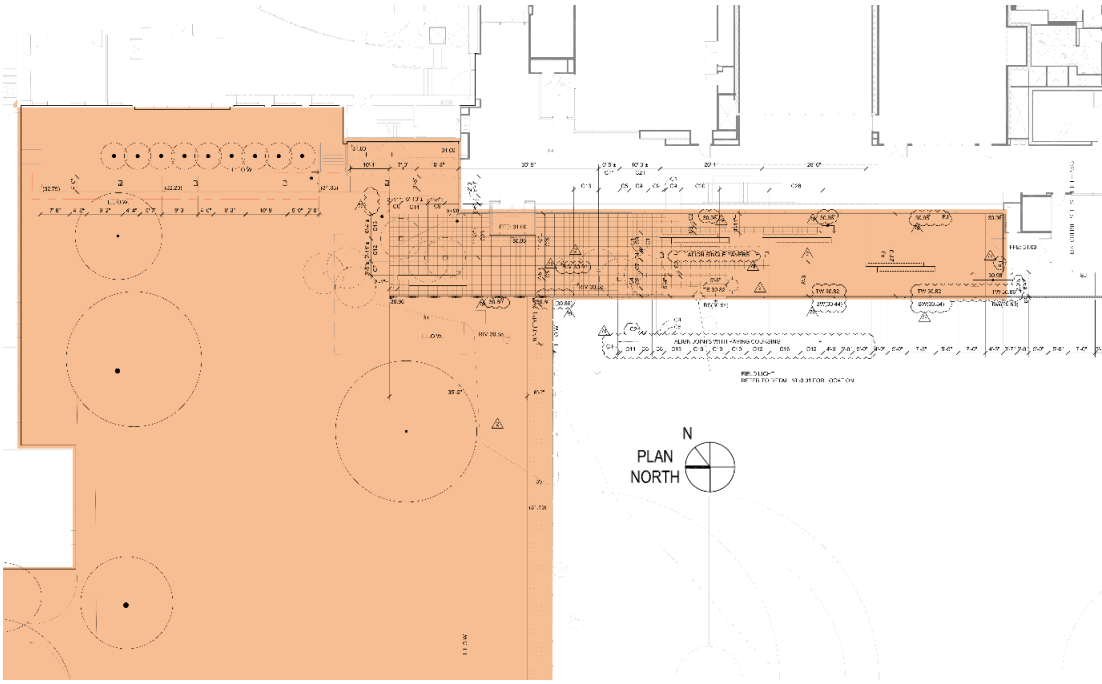


Figure 8 - First Floor North Plan - Courtyard Plaza and Entrance